

Welcome to Hotchkiss, Calgary's newest southeast family community, offering a one-of-a-kind lifestyle, with mountain views, open green spaces and more than 40-acres of wetlands surrounded by boardwalks. Stunning Mountain views and easy access to commuter routes like Deerfoot Trail and Stoney Trail, living in Hotchkiss you will have access to the many amenities available in surrounding communities, including Calgary's new South Health Campus Hospital, shops and service providers, schools, and recreational facilities.



A QUALICO Company

Lorem ipsum

Showhome: 129 & 133 Hotchkiss Way SE

facebook.com/BroadviewHomes

broadviewhomes.com

follow us on   

CONCORD II



WELCOME TO THE CONCORD II

1717 SQ FT

3 BD 2.5 BTH

OPEN FLOOR CONCEPT



A QUALICO Company



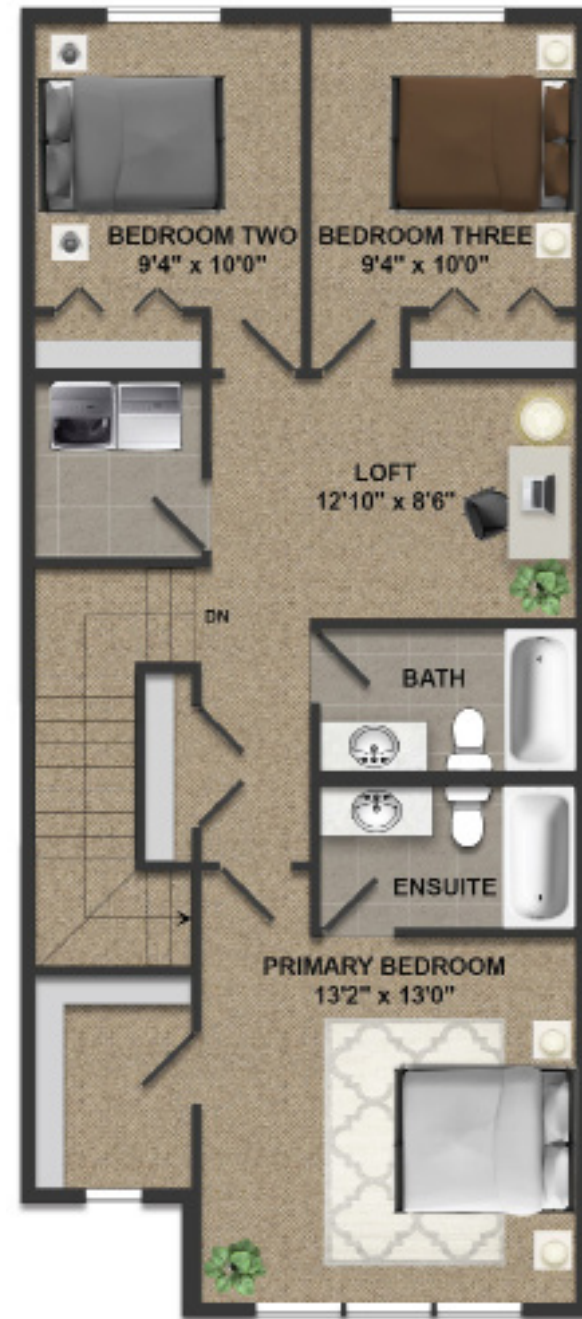
CONCORD II

TWO STOREY 1717 SQ. FT.

A fresh new plan offering 1717 Sq. Ft. Starting with an open main floor with Kitchen, Great Room and Dining Nook flowing seamlessly; and convenient Flex Room that can also be converted into a Bedroom or make it a private Office with the Optional Floor Plans offered for this home. This home also features 3 bedrooms, 2.5 baths, second floor laundry, 4-piece master En-suite and spacious master bedroom.



MAIN FLOOR - 882 SQ. FT.



UPPER FLOOR - 835 SQ. FT.

THE HOTCHKISS STYLES

Welcome to Hotchkiss, where each Broadview Home is offered in four distinct architectural styles, giving you the ability to create the home that best suits your life and your style.

The styles selected for Hotchkiss are classic with a fresh modern twist, allowing residents to choose a home that fits their own personal taste. Read all about the hallmark features of each style below, then speak with your Broadview representative to learn more about how we can build your ideal home in your preferred style.



CRAFTSMAN

Growing out of the earth, the Craftsman style is an extension of its natural surroundings. Incorporating wood and stone, these traditional homes often feature distinctively sturdy columns and solid brackets to support rooflines that are slightly steeper in pitch. Other design elements such as shakes and vertical siding are often used to call to mind the decorative history of the style.



COLONIAL

This elevation is influenced by Georgian architecture and emphasizes symmetrical massing, or forms. A great mix of classic and modern tastes, colonial homes often include gable roofs, classical columns, brick work and individual windows that create an over all balanced look to the home..



FARMHOUSE

A favourite for its manor-style features, French Country is now available in Broadview's Ambleton's lineup. With simple detailing compared to other styles, Farmhouse homes feature steeply pitched gable or cottage roofs. Round, arched porches lead to entry ways while window grills and batten detailing frame the windows. Stucco exteriors offset the subtle details of this distinguished style.



PRAIRIE

This distinctive style harkens back to Frank Lloyd Wright designs of the early 20th century. Unique and simplistic due to their square design, Prairie homes maintain their individuality through use of various heights and depths. Homes have low pitched roofs with widely overhanging eaves. Prairie style emphasizes horizontal lines, square front porch supports, bands of casement windows, and decorative banding along exterior walls. Exterior cladding is to be vinyl siding, Hardi board.

Elevation is representation of given home style and may not be built exactly as shown.

* Broadview Homes reserves the right to change plans, features and specifications without notice. Options NOT included except as specifically itemized in the purchase agreement. Standards/reversed plans at the sole discretion of the builder. Square footage is approximate. Elevations, features and square footages may vary by area. Photos of house may not be exactly as shown.