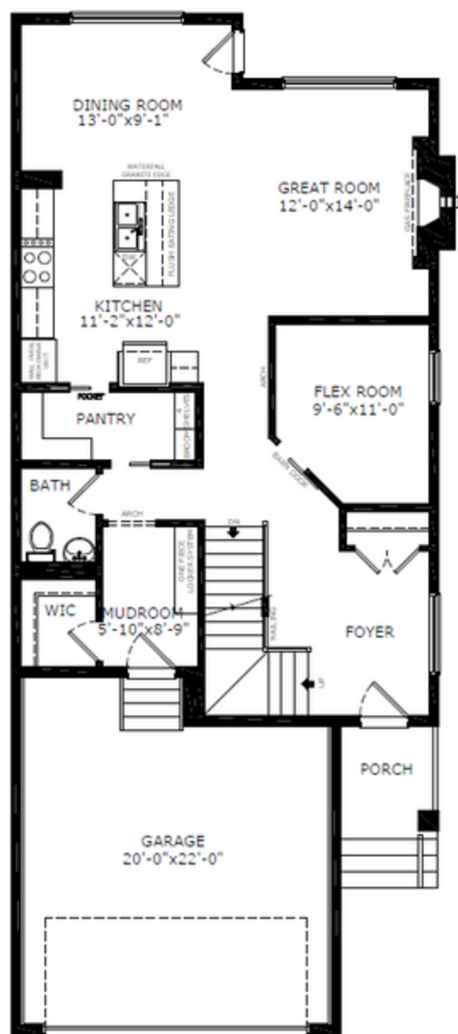
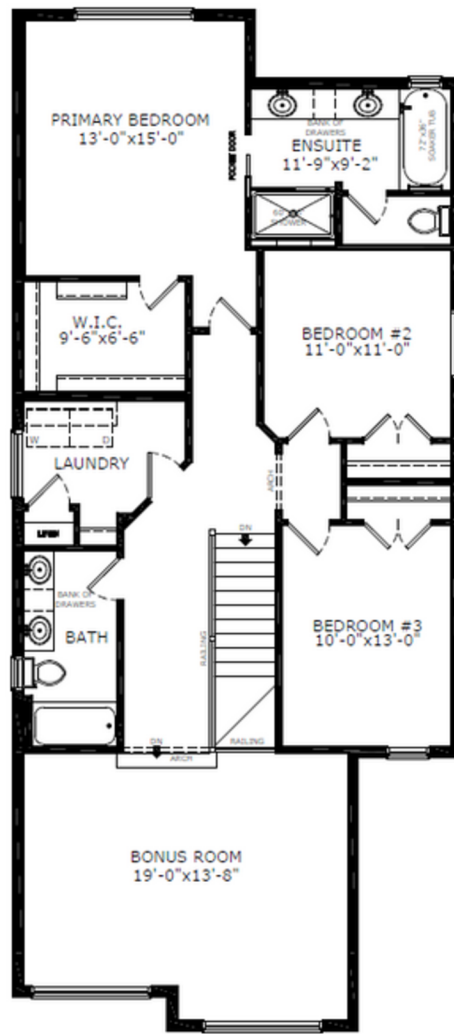


# Floorplan



Main Level: 1051 sq. ft.



Upper Level: 1344 sq. ft.



Elevation



Lot Location



Diane Blackman  
Area Manager



Teagan Rohl  
Area Associate

## Contact:

P: 403-981-0073

E: southbow@sterlingcalgary.com



Total Sq. Ft. - 2395



Bedrooms - 3



Bathrooms - 2.5



Garage - 2

## Features

### Kitchen

- Executive kitchen with built-in stainless-steel appliances, chimney hoodfan and gas cooktop
- Pendant lighting above island
- Walk through pantry with pocket door
- Waste pull out bin

### Convenience

- Flex room on main floor with barn door
- Mudroom lockers
- BBQ gasline RI
- LVP flooring throughout main floor
- Developed basement stairwell

### Bathrooms

- 5-piece ensuite with soaker tub and walk-in shower with tiled walls and niche
- Bank of drawers in ensuite and main bath vanity
- 4-piece main bath
- LVP flooring in all bathrooms

### Rest of Home

- Gas fireplace with maple mantle and tile below
- Paint grade railing with iron spindles
- 9'1" bonus room ceiling
- Wall detail in primary bedroom
- Upper floor laundry



**Without the Wait homes offer the benefit of moving in sooner, plus include these extra perks:**

- **Curated Design:** Most popular floorplans and personalized interiors
- **Smart Energy:** Built-in energy efficiency and Smart Home features
- **Easy Move by Virtu:** Concierge services, moving totes, and a customer portal app
- **Sterling Built Rewards:** Exclusive perks, offers, and partnerships for homeowners



## Home Interiors