

\$610,002

**95 SOUTHBOROUGH
CRESCENT**



CONCORD II - CRAFTSMAN

1717 SQ FT • 3 BEDROOMS • 2^{1/2} BATH

FEATURES

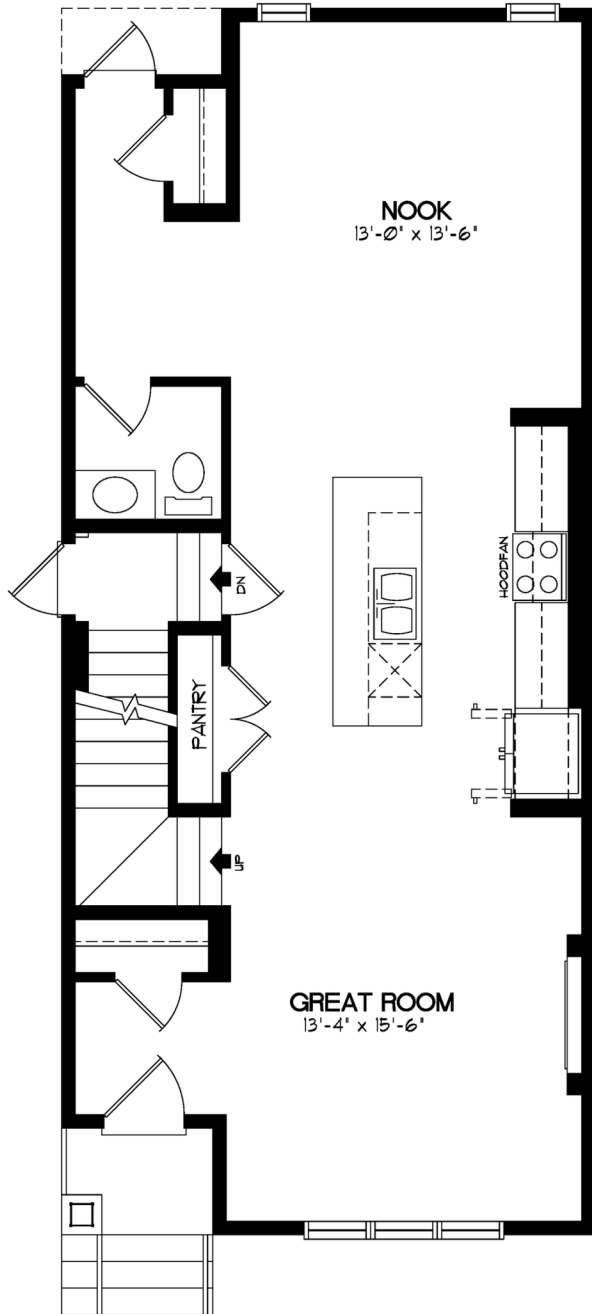
- Stainless steel appliances including gas range, hood fan, and built-in microwave
- 42" upper cabinets c/w soffit and crown molding to ceiling
- 9' Basement ceilings
- 200 AMP electrical panel
- 2 stage furnace
- Granite countertops
- Gel stained fibre glass front door
- Tile in Ensuite, Main Bath & Laundry

JENNIFER PIRZEK

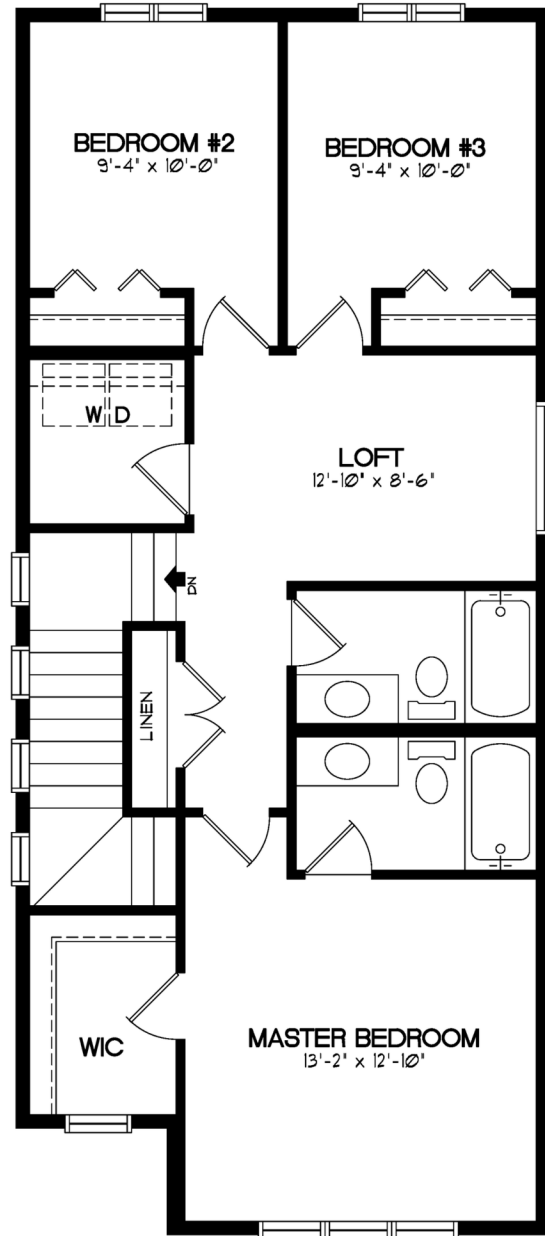
403-993-9162
jpirzek@broadviewhomes.com

 **broadview**
HOMES
A QUALICO Company

Scan the QR code or visit our website to view available lots, new home models, quick possessions, and make an appointment with our Area Sales Manager . broadviewhomescalgary.com/communities/ambleton-calgary-nw/



MAIN FLOOR - 882 SQFT



UPPER FLOOR - 835 SQFT

SOUTHBOW
— L A N D I N G —

JENNIFER PIRZEK
403-993-9162
jpirzek@broadviewhomes.com

broadview
HOMES
A QUALICO Company

**Broadview Homes reserves the right to change plans, elevations, features, and/or specifications without notice. Prices are subject to change without obligation or notice. Square footage is approximate. Plans, elevations, features, and square footages may vary by area.*