

\$566,980

45 SOUTHBOROUGH LANE



NEWPORT II - FARMHOUSE

1491 SQ FT • 3 BEDROOMS • 2^{1/2} BATH

FEATURES

- Stainless steel appliances including gas range, hood fan, and built-in microwave
- 42" upper cabinets c/w soffit and crown molding to ceiling
- 9' Basement ceilings
- 200 AMP electrical panel
- 2 stage furnace
- Granite/Quartz countertops
- Gel stained fibre glass front door
- Tile in Ensuite, Main Bath & Laundry

MICHAEL LOEWEN

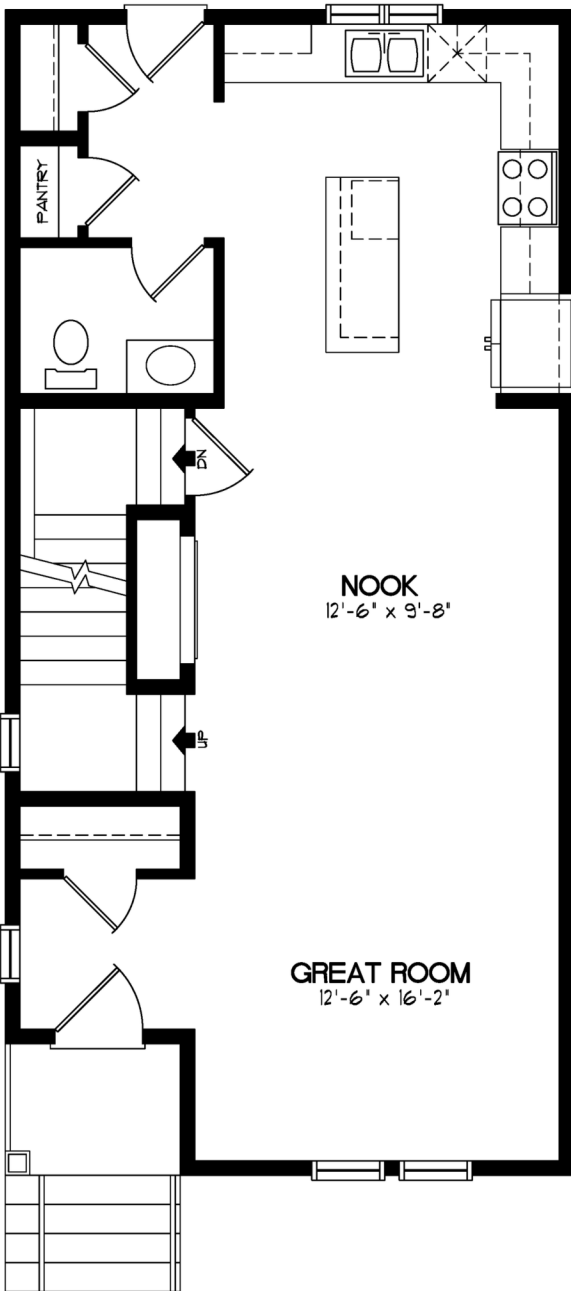
306.241.3934

michael.loewen@broadviewhomes.com

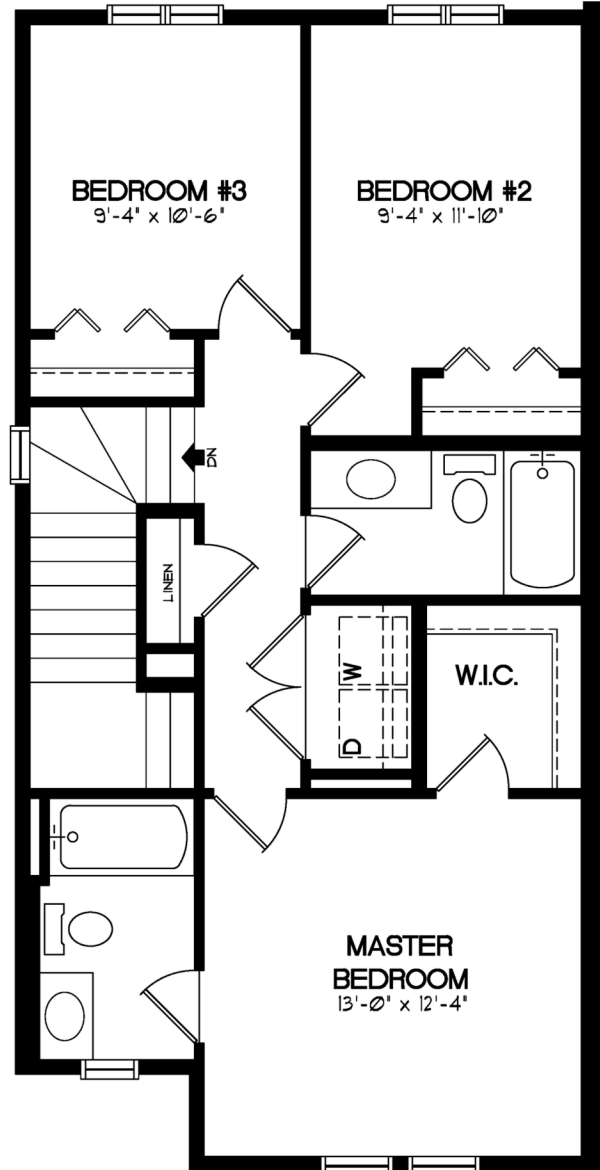
 **broadview**
HOMES

A QUALICO Company

Scan the QR code or visit our website to view available lots, new home models, quick possessions, and make an appointment with our Area Sales Manager . broadviewhomescalgary.com/communities/southbowlanding/



MAIN FLOOR - 773 SQFT



UPPER FLOOR - 718 SQFT

SOUTHBOW
— L A N D I N G —

MICHAEL LOEWEN
306.241.3934
michael.loewen@broadviewhomes.com

broadview
HOMES

A QUALICO Company

**Broadview Homes reserves the right to change plans, elevations, features, and/or specifications without notice. Prices are subject to change without obligation or notice. Square footage is approximate. Plans, elevations, features, and square footages may vary by area.*