

**\$643,370**

**A**



**B**



**C**



**D**



**E**



## 99 SOUTHBOROUGH CRESCENT



**NEWPORT II - MID CENTURY MODERN**

**1491 SQ FT • 3 BEDROOMS • 2<sup>1/2</sup> BATH**

### **FEATURES**

- Stainless steel appliances including gas range, hood fan, and built-in microwave
- 42" upper cabinets c/w soffit and crown molding to ceiling
- 9' Basement ceilings
- 200 AMP electrical panel
- 2 stage furnace
- Granite countertops
- Gel stained fibre glass front door
- Tile in Ensuite, Main Bath & Laundry

**MICHAEL LOEWEN**

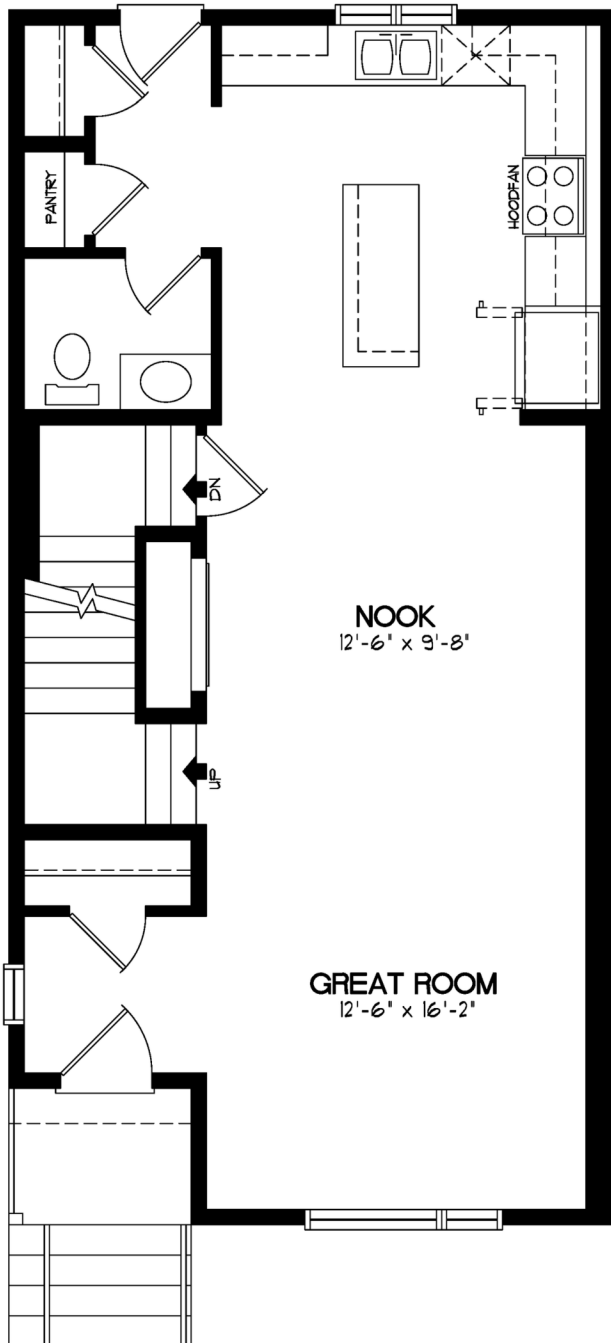
306.241.3934

michael.loewen@broadviewhomes.com

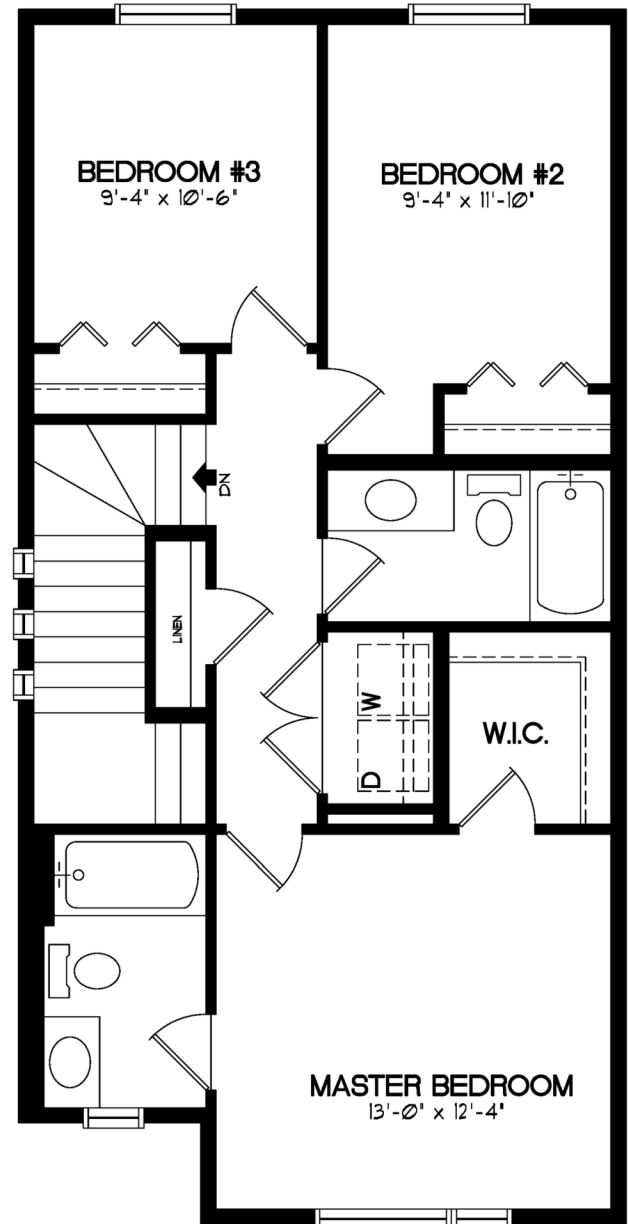
 **broadview**  
HOMES

A QUALICO Company

Scan the QR code or visit our website to view available lots, new home models, quick possessions, and make an appointment with our Area Sales Manager . [broadviewhomescalgary.com/communities/southbowlanding/](http://broadviewhomescalgary.com/communities/southbowlanding/)



**MAIN FLOOR - 773 SQFT**



**UPPER FLOOR - 718 SQFT**

**SOUTHBOW**  
— L A N D I N G —

**MICHAEL LOEWEN**  
306.241.3934  
[michael.loewen@broadviewhomes.com](mailto:michael.loewen@broadviewhomes.com)

**broadview**  
HOMES  
A QUALICO Company

*\*Broadview Homes reserves the right to change plans, elevations, features, and/or specifications without notice. Prices are subject to change without obligation or notice. Square footage is approximate. Plans, elevations, features, and square footages may vary by area.*