

Address

180 Southborough Common 280023

Job#

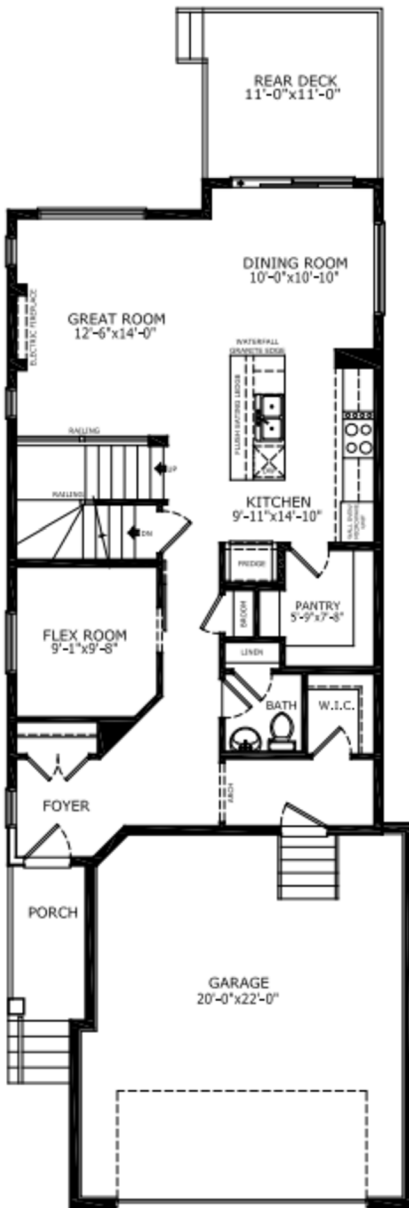
 Total Sq. Ft. - 2164

 Bedrooms - 3

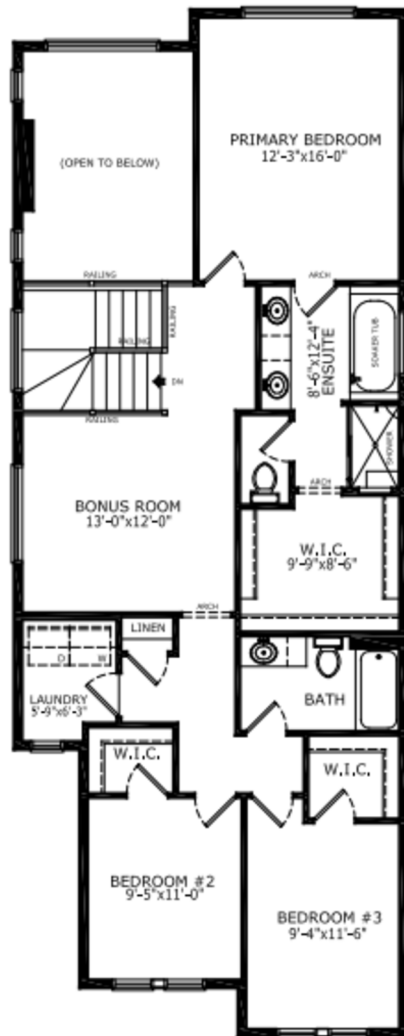
 Bathrooms - 2.5

 Garage - 2 Car

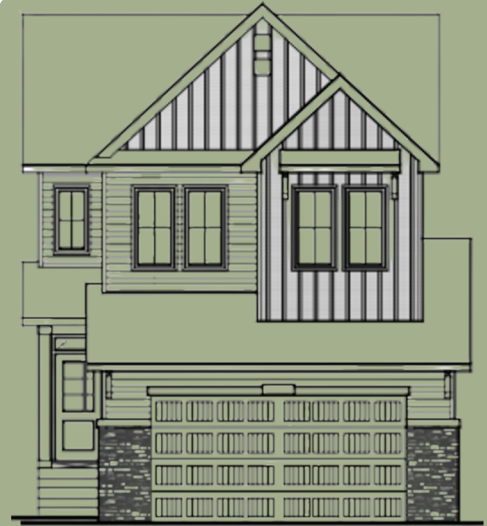
Floorplan



Main Level: 997 sq. ft.



Upper Level: 1167 sq. ft.



Elevation



Lot Location



Diane Blackman
Area Manager



Teagan Rohl
Area Associate

Contact:

P: (403) 981-2619

E: southbow@sterlingcalgary.com

Features



Without the Wait homes offer the benefit of moving in sooner, plus include these extra perks:

- **Curated Design:** Most popular floorplans and personalized interiors
- **Smart Energy:** Built-in energy efficiency and Smart Home features
- **Easy Move by Virtu:** Concierge services, moving totes, and a customer portal app
- **Sterling Built Rewards:** Exclusive perks, offers, and partnerships for homeowners

Home Highlights

- 2025 Specifications
- Side entrance
- 9' basement wall height
- Rear deck with BBQ gasline rough-in
- Main floor flex room
- Open to above in great room
- Electric fireplace with floor to ceiling tile
- Paint grade railing with iron spindles
- Vaulted bonus room
- LVP throughout main floor
- Quartz countertops with undermount sinks
- Triple pane windows
- Additional windows

Kitchen Elements

- Executive kitchen with built-in stainless steel appliances
- Gas cooktop
- Fridge with water and ice dispenser
- Silgranit sink
- Waterfall island
- Pots and pans drawers
- Walk-in pantry

Bathroom Elements

- 5-piece ensuite with soaker tub and tiled shower
- Bank of drawers in ensuite and main bath vanity
- Tile flooring in wet areas



Kitchen



Home Interiors