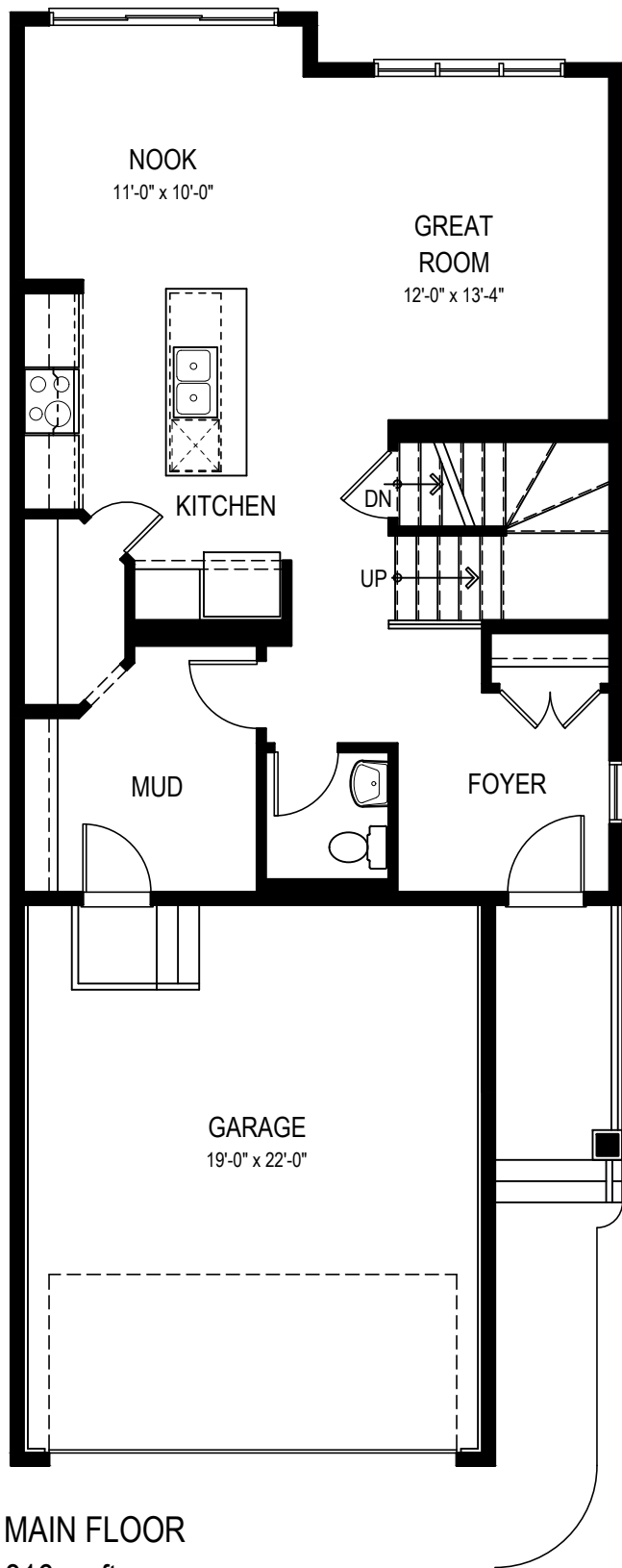
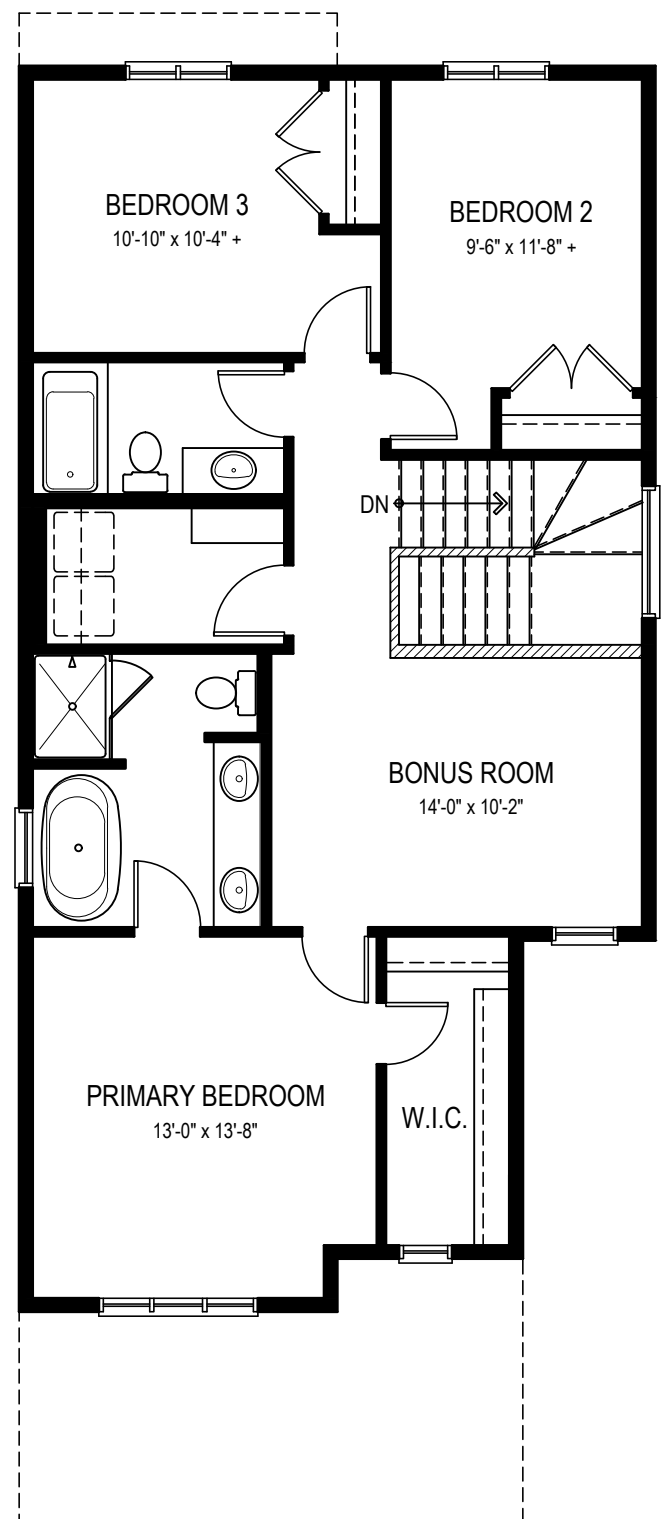


PALISADE 2 - SOUTHBOW

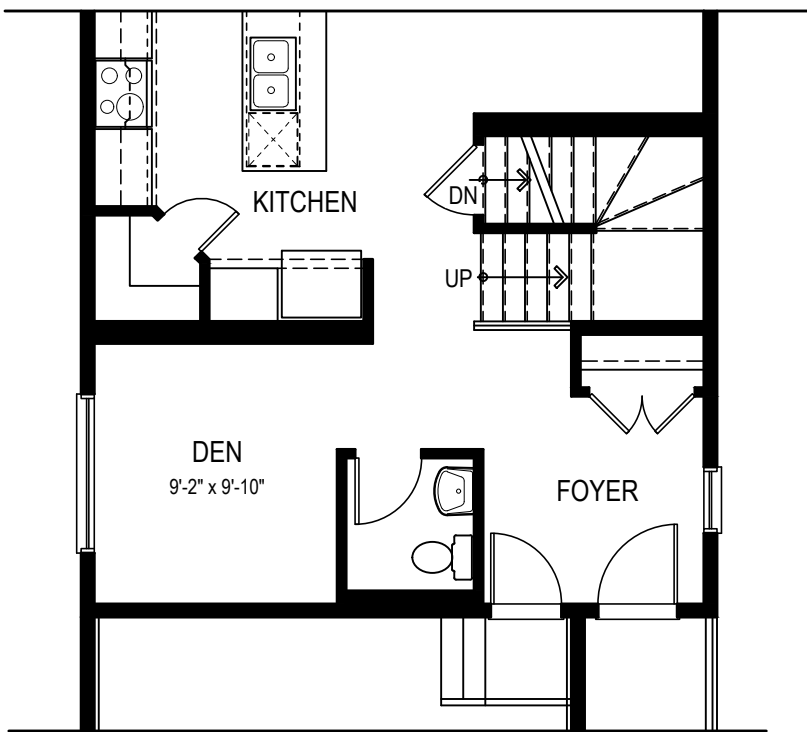
1860 SQ.FT. - 24'



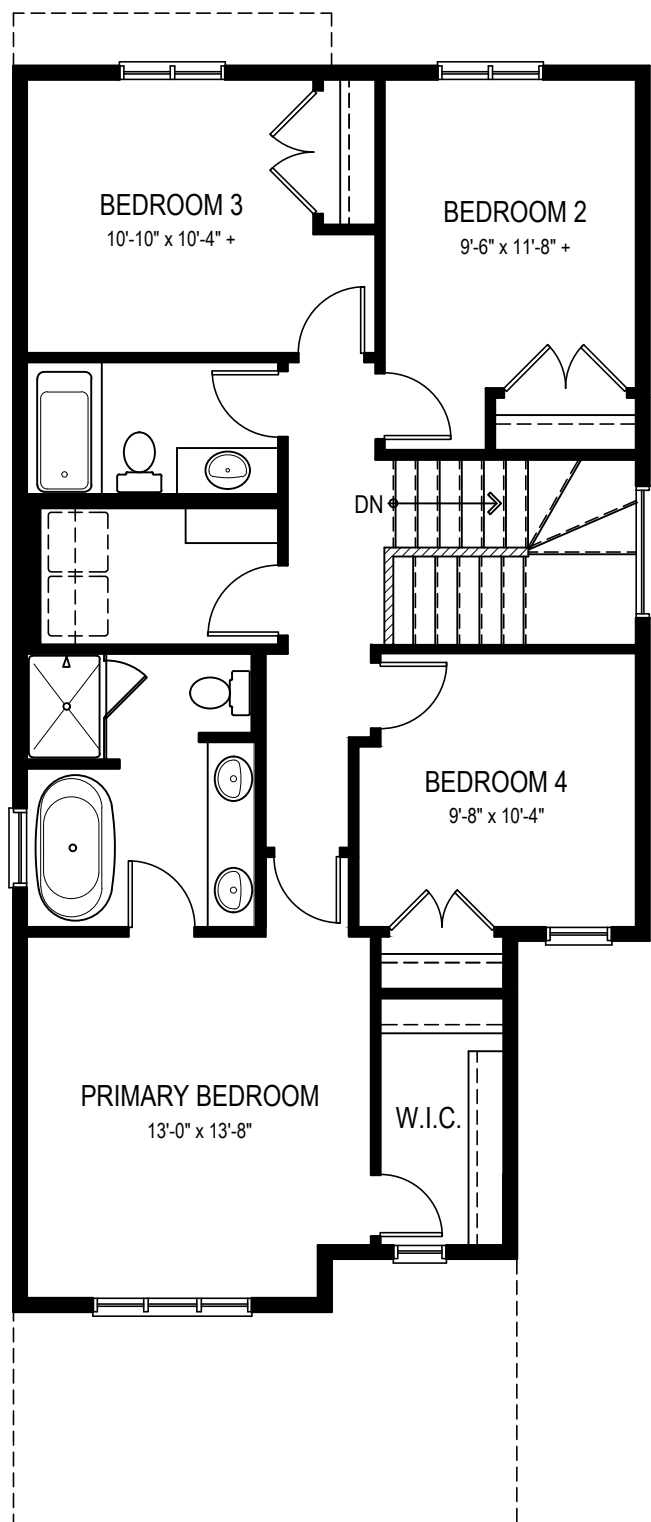
MAIN FLOOR
816 sq.ft.



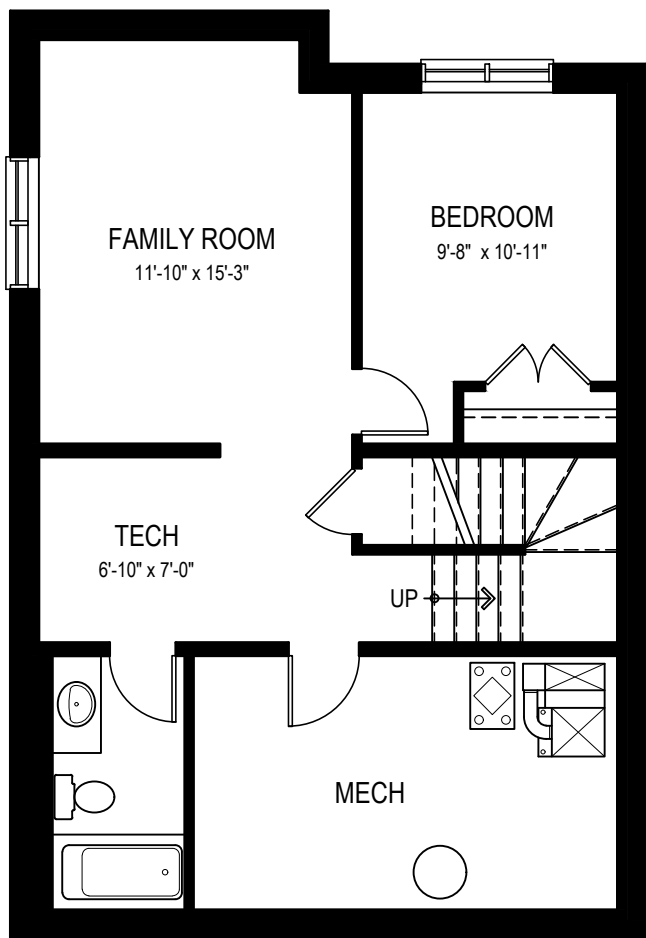
UPPER FLOOR
1044 sq.ft.



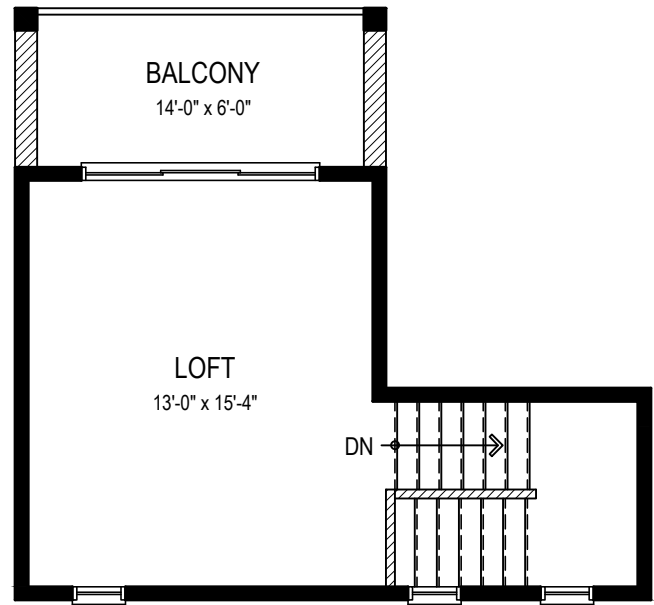
DEN OPTION



4 BEDROOM OPTION



BASEMENT DEVELOPMENT OPTION
511 sq.ft.



LOFT OPTION
ADDS 309 sq.ft.