


VALMORE 4

Address

56 Southborough Common 281023

Job#

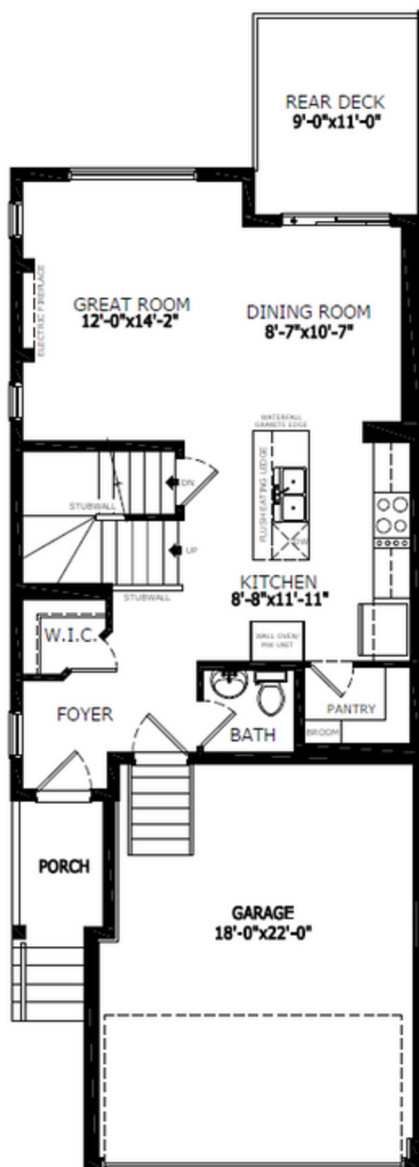
 Total Sq. Ft. - 1556

 Bedrooms - 3

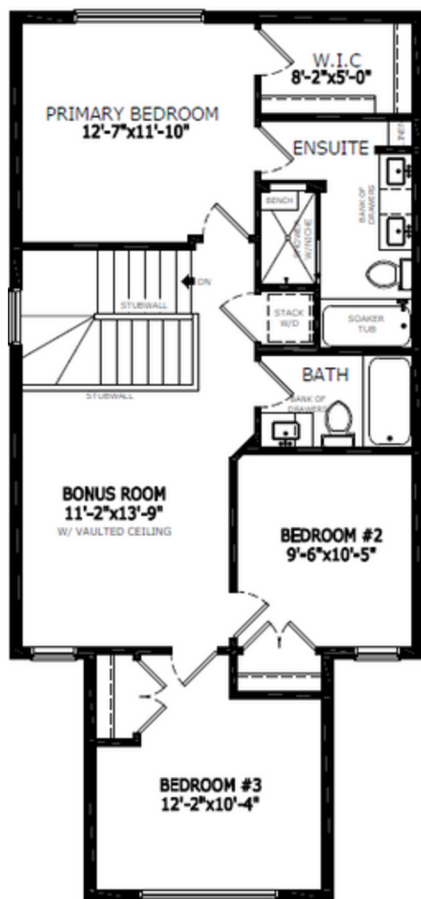
 Bathrooms - 2.5

 Garage - 2 Car

Floorplan



Main Level: 693 sq. ft.



Upper Level: 863 sq. ft.



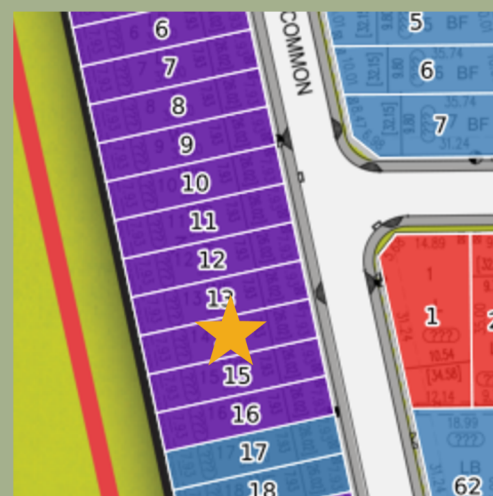
Diane Blackman
Area Manager



Teagan Rohl
Area Associate



Elevation



Lot Location

Contact:

P: (403) 981-2619


E: southbow@sterlingcalgary.com

VALMORE 4

Address

56 Southborough Common 281023

Job#

 Total Sq. Ft. - 1556

 Bedrooms - 3

 Bathrooms - 2.5

 Garage - 2 Car

Features



Without the Wait homes offer the benefit of moving in sooner, plus include these extra perks:

- **Curated Design:** Most popular floorplans and personalized interiors
- **Smart Energy:** Built-in energy efficiency and Smart Home features
- **Easy Move by Virtuo:** Concierge services, moving totes, and a customer portal app
- **Sterling Built Rewards:** Exclusive perks, offers, and partnerships for homeowners

Home Highlights

- 2025 Specifications
- Backs onto greenspaces
- Walkout basement
- 9' Basement ceilings
- Rear deck with privacy wall and BBQ gas line rough-in
- Electric fireplace
- Vaulted bonus room
- LVP throughout main floor
- Quartz countertops with undermount sinks
- Upper floor laundry
- Additional windows throughout

Kitchen Elements

- Executive kitchen with stainless steel built-in appliances, chimney hood fan and gas cooktop
- Pendant lighting
- Walk-in pantry

Bathroom Elements

- 5 Piece ensuite with soaker tub
- Fully tiled shower with bench, niche, glass shelves and barn door in ensuite
- Bank of drawers in ensuite and main bath
- Rectangular sinks in upper bathrooms



Home Interiors