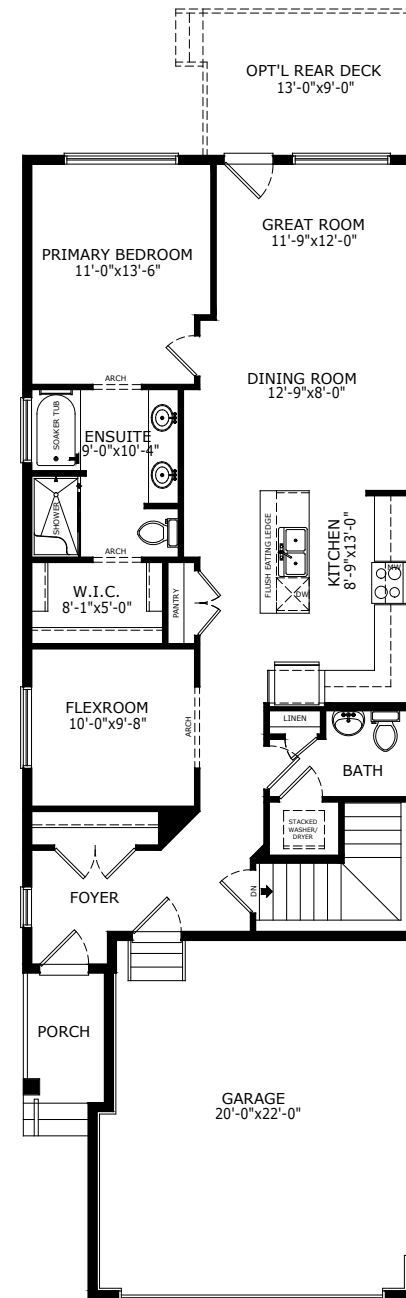


Sterling HOMES

A QUALICO Company

1164 SQ FT
1 BED
1.5 BATHS

WALKER



MAIN: 1164 SQ FT

Build Your Life

STERLINGCALGARY.COM

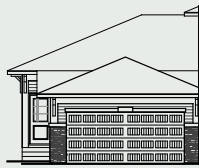
Sterling HOMES

A QUALICO Company

ELEVATIONS



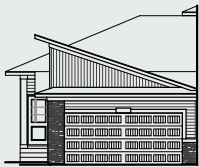
ARTS & CRAFTS



CONTEMPORARY



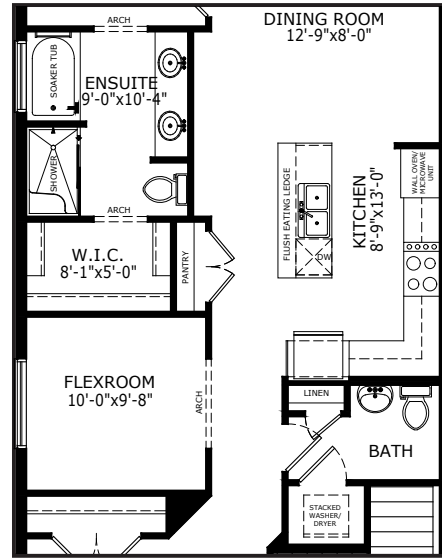
FARMHOUSE



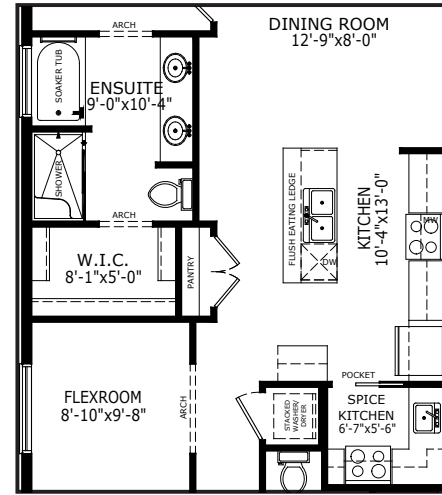
MID CENTURY
MODERN

MAIN FLOOR OPTIONS

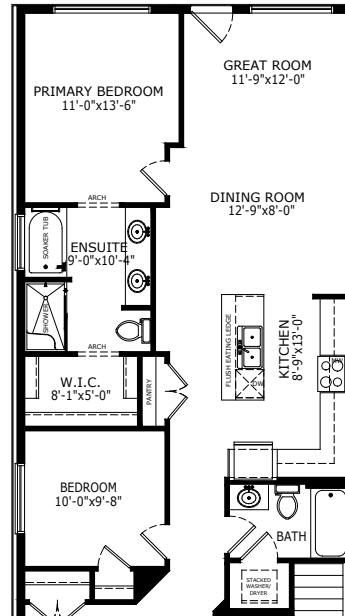
OPTIONAL EXECUTIVE KITCHEN



OPTIONAL SPICE KITCHEN

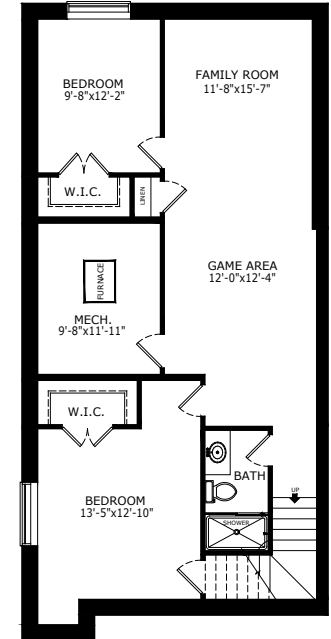


OPTIONAL FULL BATH & BEDROOM



BASEMENT OPTION

STANDARD 900 SQ FT



*Legal Suite availability varies by community and municipal regulations.



Scan here
for floorplan
options and
more

Build Your Life

STERLINGCALGARY.COM